



### Ordering Information

IRS-201-1A3D-R/B

- 基座颜色 Base color
- 盖帽颜色 Cap color
- 直流灯 DC lamp
- 盖帽标记 Cap marking
- 盖帽种类 Cap options
- 产品序号 Product order
- 电路特性 Circuitry trait
- 刀数 Poles
- IRS带灯波动开关 Illuminated Rocker Switch
- RS不带灯波动开关 Rocker Switch

### Specification

- 1.规格 Rating:20A 125VAC;15A 250VAC;35A 12VDC
- 2.接触电阻 Contact Resistance:35mΩ max
- 3.绝缘电阻 Insulation Resistance:500VDC 100MΩ min
- 4.耐电压 Dielectric Strength:1500VAC, 1Minute
- 5.操作温度 Operating Temperature:-25℃ ~ +85℃
- 6.电气寿命 Electrical Life:10,000 Cycles

#### Circuitry trait

01	ON	-	OFF
02	ON	-	ON
11	(ON)	-	OFF
03	ON	OFF	ON

( ) : 回弹指示 Indicates Momentary

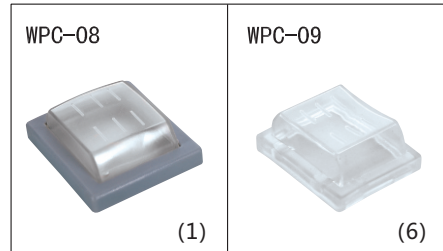
#### Cap color

- 黑 Black (B)
- 白 White (W)
- 红 Red (R)
- 黄 Yellow (Y)
- 绿 Green (G)
- 蓝 Blue (BL)
- 桔黄 Orange (O)
- 灰 Gray (GR)

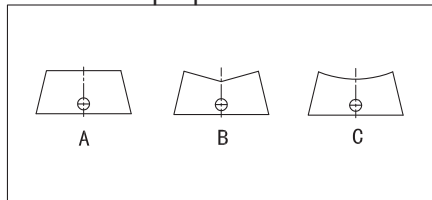
#### Base color

- 黑 Black (B)
- 白 White (W)
- 灰 Gray (GR)

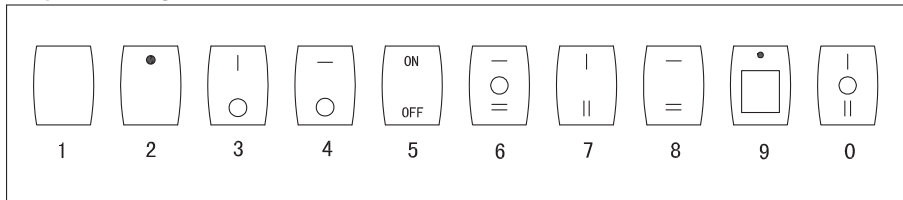
#### Water proof cap



#### Cap options



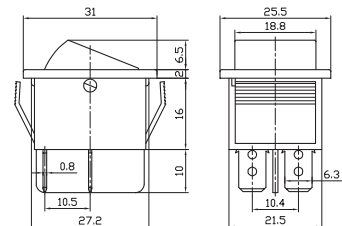
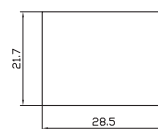
#### Cap marking



IRS-201-1A ON-OFF

RS-201-1A ON-OFF

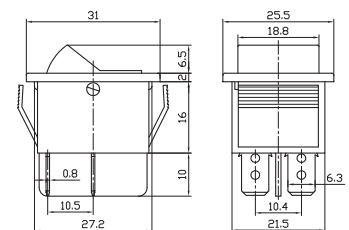
DPST 4P



IRS-201-1B ON-OFF

RS-201-1B ON-OFF

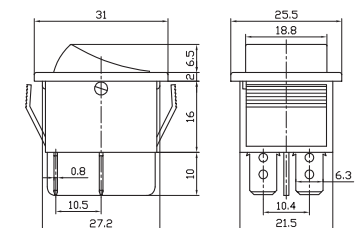
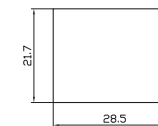
DPST 4P



IRS-201-1C ON-OFF

RS-201-1C ON-OFF

DPST 4P



# Double-poles Rocker Switch

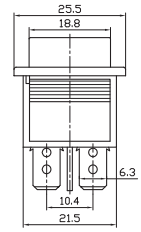
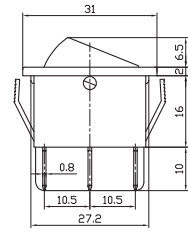
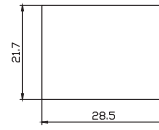
# Double-poles Illuminated Rocker Switch

# RS-2 Series

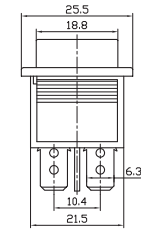
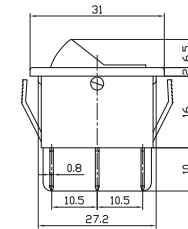
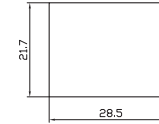
# IRS-2 Series



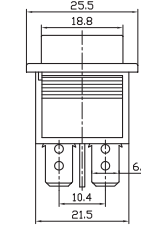
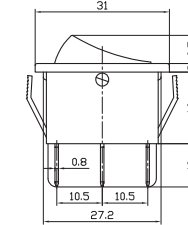
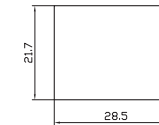
**IRS-202-1A** ON-ON  
**IRS-203-1A** ON-OFF-ON  
**RS-202-1A** ON-ON  
**RS-203-1A** ON-OFF-ON  
 DPDT 6P



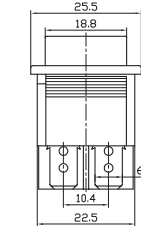
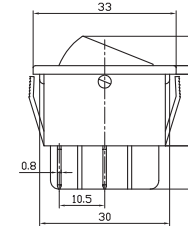
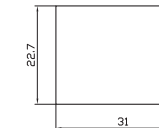
**IRS-202-1B** ON-ON  
**IRS-203-1B** ON-OFF-ON  
**RS-202-1B** ON-ON  
**RS-203-1B** ON-OFF-ON  
 DPDT 6P



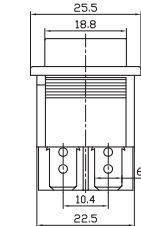
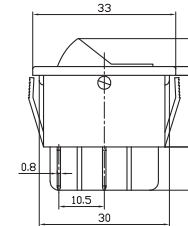
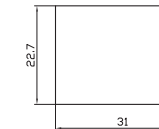
**IRS-202-1C** ON-ON  
**IRS-203-1C** ON-OFF-ON  
**RS-202-1C** ON-ON  
**RS-203-1C** ON-OFF-ON  
 DPDT 6P



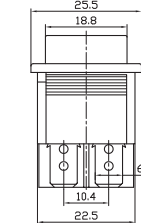
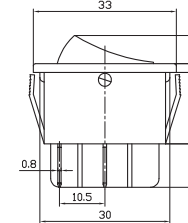
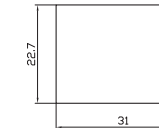
**IRS-201-2A** ON-OFF  
**RS-201-2A** ON-OFF  
 DPST 4P



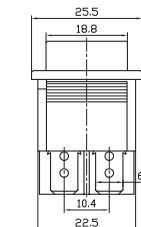
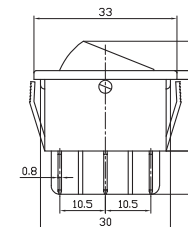
**IRS-201-2B** ON-OFF  
**RS-201-2B** ON-OFF  
 DPST 4P



**IRS-201-2C** ON-OFF  
**RS-201-2C** ON-OFF  
 DPST 4P



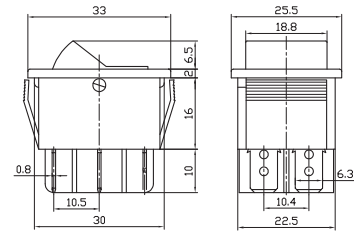
**IRS-202-2A** ON-ON  
**RS-202-2A** ON-ON  
 DPDT 6P



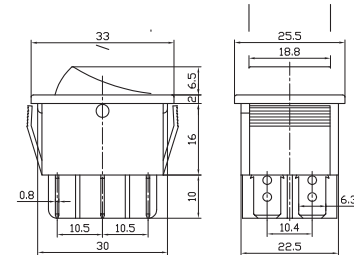
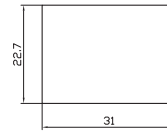
# Double-poles Rocker Switch **RS-2 Series** Double-poles Illuminated Rocker Switch **IRS-2 Series**



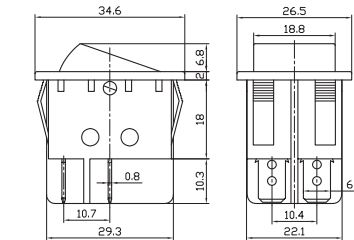
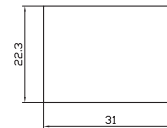
**IRS-202-2B** ON-ON  
**RS-202-2B** ON-ON  
 DPDT 6P



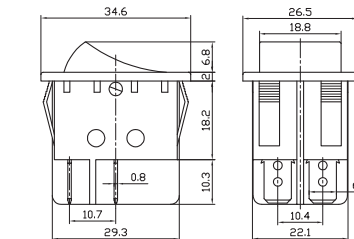
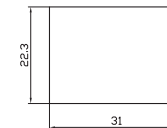
**IRS-202-2C** ON-ON  
**RS-202-2C** ON-ON  
 DPDT 6P



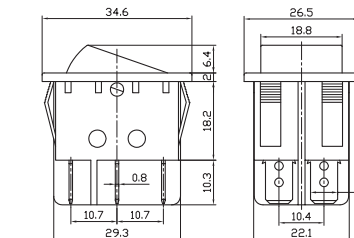
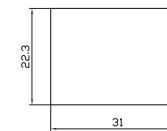
**IRS-201-3A** ON-OFF  
**RS-201-3A** ON-OFF  
 DPST 4P



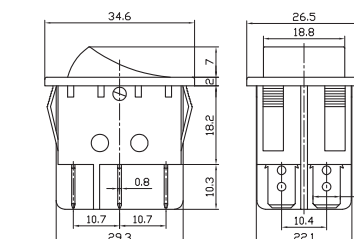
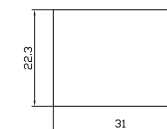
**IRS-201-3C** ON-OFF  
**RS-201-3C** ON-OFF  
**RS-211-3C** (ON)-OFF  
 DPST 4P



**IRS-202-3A** ON-ON  
**RS-202-3A** ON-ON  
 DPDT 6P



**IRS-202-3C** ON-ON  
**RS-202-3C** ON-ON  
 DPDT 6P

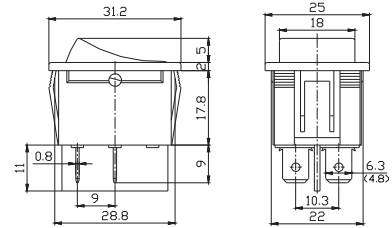
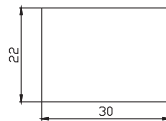


# Double-poles Rocker Switch RS-2 Series

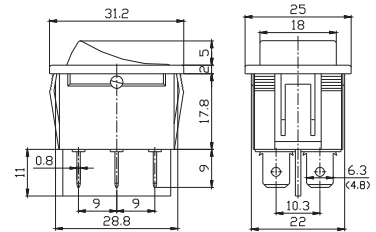
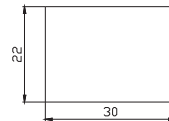
## Double-poles Illuminated Rocker Switch IRS-2 Series



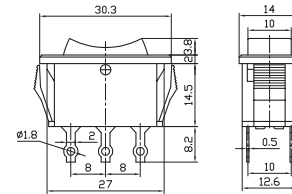
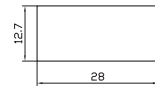
**RS-201-4C** ON-OFF  
DPST 4P



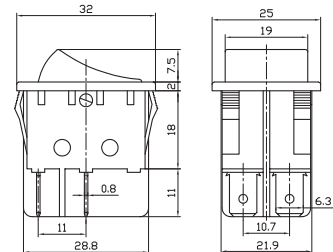
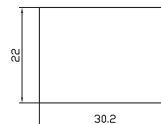
**RS-202-4C** ON-ON  
**RS-203-4C** ON-OFF-ON  
**RS-223-4C** (ON)-OFF-(ON)  
DPDT 6P



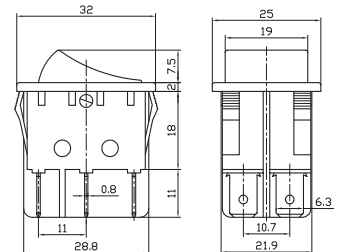
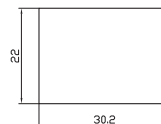
**RS-203-5C** ON-OFF-ON  
DPDT 6P  
**RS-2032-5C** ON-ON-ON  
DP3T 5P  
6A 125VAC;3A 250VAC



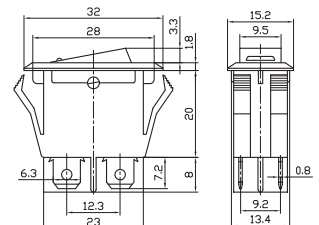
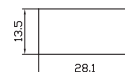
**IRS-201-6C** ON-OFF  
**RS-201-6C** ON-OFF  
20A 125VAC;16A 250VAC  
DPST 4P



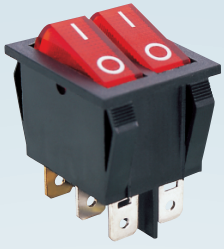
**IRS-202-6C** ON-ON  
**RS-202-6C** ON-ON  
20A 125VAC;16A 250VAC  
DPDT 6P



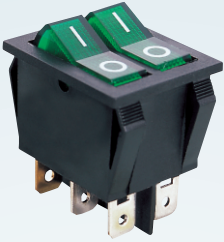
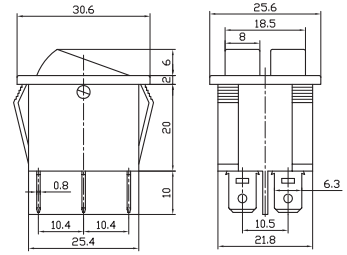
**IRS-201-7A** ON-OFF  
DPST 4P



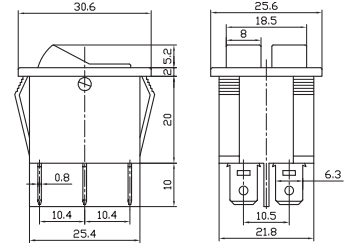
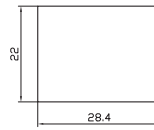
# Double-poles Rocker Switch **RS-2 Series** Double-poles Illuminated Rocker Switch **IRS-2 Series**



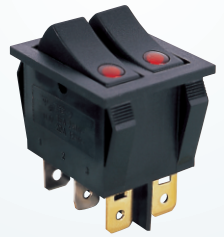
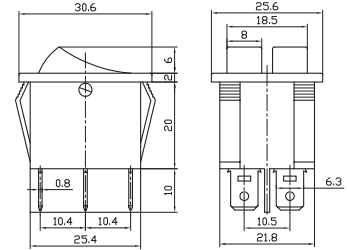
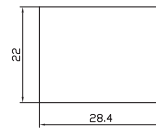
**IRS-2101-1A** ON-OFF  
 DPST 6P  
**RS-2102-1A** ON-ON  
 DPDT 6P



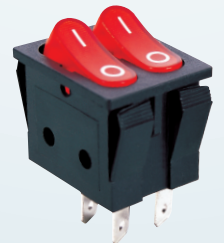
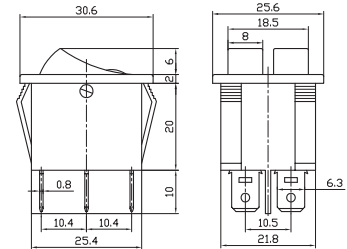
**IRS-2101-1B** ON-OFF  
 DPST 6P  
**RS-2102-1B** ON-ON  
 DPDT 6P



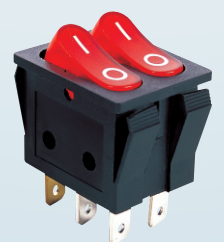
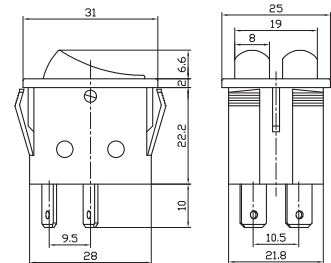
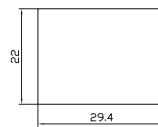
**IRS-2101-1C** ON-OFF  
 DPST 6P  
**RS-2102-1C** ON-ON  
 DPDT 6P



**IRS-2101E-1C** ON-OFF  
 DPST 6P



**RS-2101-3C** ON-OFF  
 DPST 4P



**IRS-2101-3C** ON-OFF  
 DPST 6P

