

**MOFU 35/LO/1****Weidmüller Interface GmbH & Co. KG**

Klingenbergstraße 26

D-32758 Detmold

Germany

www.weidmueller.com

**Product image**

Mounting feet are used to mount components that cannot be snapped directly on a DIN rail.

**General ordering data**

Version	Accessories, Mounting foot, Polyamide 66
Order No.	<a href="#">0646260000</a>
Type	MOFU 35/LO/1
GTIN (EAN)	4008190178574
Qty.	20 pc(s).

## MOFU 35/LO/1

Weidmüller Interface GmbH &amp; Co. KG

Klingenbergstraße 26

D-32758 Detmold

Germany

www.weidmueller.com

## Technical data

## Dimensions and weights

Depth	18.35 mm	Depth (inches)	0.722 inch
Height	58 mm	Height (inches)	2.283 inch
Width	18 mm	Width (inches)	0.709 inch
Net weight	5.704 g		

## Temperatures

Continuous operating temp., min.	-50 °C	Continuous operating temp., max.	100 °C
----------------------------------	--------	----------------------------------	--------

## Material data

Material	Polyamide 66	Colour	orange
UL 94 flammability rating	V-2		

## System specifications

Version	Mounting foot	End cover plate required	No
Rail	TS 35		

## Additional technical data

Explosion-tested version	No	Type of fixing	Snap-on
Type of mounting	Snap-on		

## Conductors for clamping (rated connection)

Type of connection	Tension-clamp connection
--------------------	--------------------------

## Dimensions

Pitch in mm (P)	18 mm
-----------------	-------

## General

Rail	TS 35
------	-------

## Classifications

ETIM 6.0	EC002848	ETIM 7.0	EC002848
ETIM 8.0	EC002848	ECLASS 9.0	27-14-11-92
ECLASS 9.1	27-14-11-92	ECLASS 10.0	27-14-11-92
ECLASS 11.0	27-14-11-92	ECLASS 12.0	27-14-11-92

## Approvals

ROHS	Conform
------	---------

## Downloads

Engineering Data	<a href="#">CAD data – STEP</a>
Engineering Data	<a href="#">WSCAD</a>
User Documentation	<a href="#">StorageConditionsTerminalBlocks</a>
Catalogues	<a href="#">Catalogues in PDF-format</a>
Brochures	

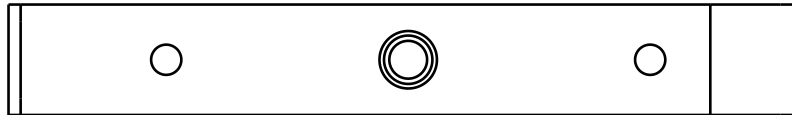
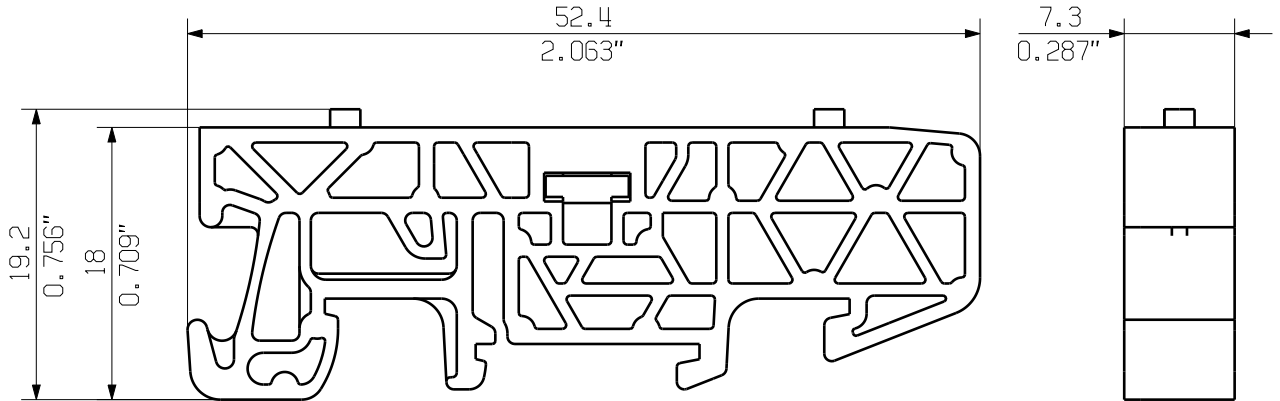
Creation date February 1, 2023 9:10:23 AM CET

Catalogue status 24.01.2023 / We reserve the right to make technical changes.

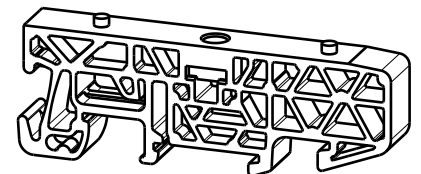
MASSE OHNE TOLERANZ SIND KEINE PRUEFFMASSE  
DIMS. WITHOUT TOLERANCE ARE NOT CONTROL DIMS.

DIE DEUTSCHE VERSION IST VERBINDLICH  
THE GERMAN VERSION IS BINDING

ALLGEMEINGUELTIGE KUNDENZEICHNUNG, AKTUELLER STAND NUR AUF ANFRAGE  
GENERAL CUSTOMER DRAWING, TOPICAL VERSION ONLY IF REQUIRED



M 1/1



WEITERGABE SOWIE VERVIELFAELTIGUNG DIESES DOKUMENTS, VERWERTUNG UND MITTEILUNG SEINES INHALTS SIND VERBOTEN, SOWEIT NICHT AUSDRUECKLICH GESTATTET. ZUWIDERHANDLUNGEN VERPFLICHTEN ZU SCHADENERSATZ. ALLE RECHTE FUER DEN FALL DER PATENT-, GEBRAUCHSMUSTER- ODER GESCHMACKSMUSTEREINTRAGUNG VORBEHALTEN. THE REPRODUCTION, DISTRIBUTION AND UTILIZATION OF THIS DOCUMENT AS WELL AS THE COMMUNICATION OF ITS CONTENTS TO OTHERS WITHOUT EXPLICIT AUTHORIZATION IS PROHIBITED. OFFENDERS WILL BE HELD LIABLE FOR THE PAYMENT OF DAMAGES. WEIDMUELLER EXCLUSIVELY RESERVES THE RIGHT TO FILE FOR PATENTS, UTILITY MODELS OR DESIGNS. © WEIDMUELLER INTERFACE GmbH & Co.KG

GENERAL TOLERANCE:  
DIN ISO 2768-mK



MAX. NRN./NOS.

84373/5 01  
29.09.15  
GUETZLAFF\_T  
MODIFICATION

**Weidmüller**

CAT.NO.: 193760000

**4 42839 02**

DRAWING NO. ISSUE NO.  
SHEET 01 OF 01 SHEETS



DATE NAME

DRAWN 24.02.2006 NEUMANN\_G

RESPONSIBLE KRUG\_M

CHECKED 02.10.2015 LANG\_T

APPROVED LANG\_T

**BV/SV 7.62HP MOFU GR**  
MONTAGEFUSS  
SNAP ON FOOT

SCALE: 2/1

SUPERSEDES: .

PRODUCT FILE: SV/BV 7.62 HP

7340