

# Product Specification

Number: L-KLS6-SQP-5W-39RJ-L32  
Name: Cement Resistance  
Specification: \_\_\_\_\_  
Customer: \_\_\_\_\_  
Date: 2024-04-15

Customer Signature:

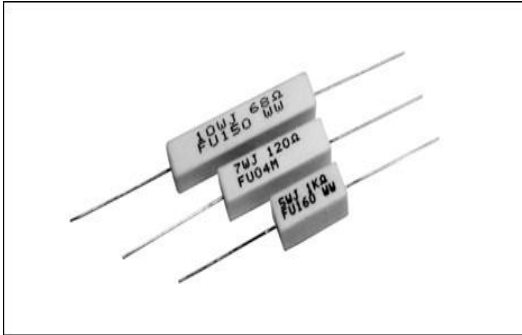


**NINGBO KLS ELECTRONIC CO; LTD**  
Tel : 0086-574-86828566  
Fax : 0086-574-86824882  
ADD : NO. 8-1, RONGXIA RD. XIAPU SHANQIAN  
INDUSTRIAL ZONE BEILUN NINGBO ZHEJIANG.

Compile	Check	Review	Approval
Jenny	Jack.C		

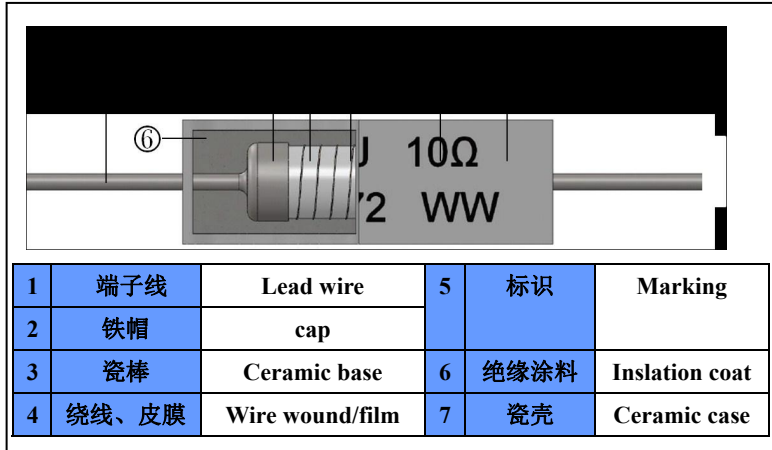
**水泥电阻器**  
CEMENT RESISTOR(Standard Type)

**水泥电阻器**  
CEMENT RESISTOR(Small Type)

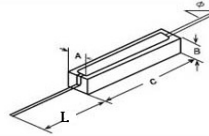


本体颜色 : Body color  
白色 : White  
标示 : Marking  
文字 : Alphanumeric

### ■ 结构图 Construction



### ■ Dimensions



电阻器品种	功率(W)	阻值范围(Ω)	尺寸(mm)			
			A/B	C	Φ±0.1	L
KLS6-SQP	5	0.24-680	9.5±1	22.0±1.5	0.7	32±1

### ■ 特性 Feature

- ◎ 不燃与绝缘之安全设计
- ◎ Compact type with safety design of non-flammability and insulation.
- ◎ 可提供低电感
- ◎ Low inductance is available.
- ◎ 长期稳定性佳
- ◎ Stable long life.
- ◎ 可依客户需求制作
- ◎ Can be produced according to customer's request.
- ◎ 产品符合欧盟RoHS要求
- ◎ Products meet EU-RoHS.

### ■ 参考规格 Reference standards

- JIS C 5201-1

### ■ 造型对应表 Type matrix

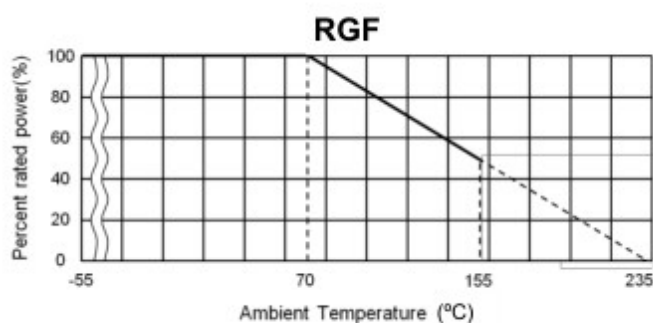
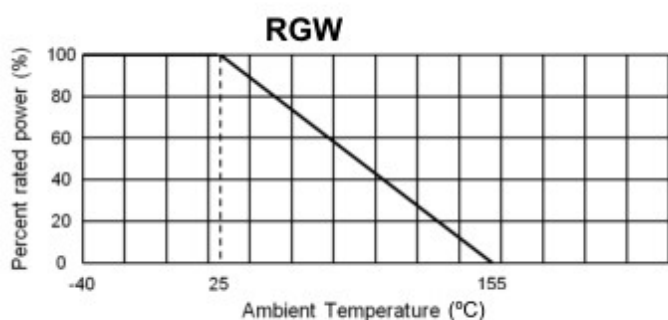
RG Type	Rated Power(W)										
	1	2	3	5	7	10	15	20	25	30	40
P	◎	◎	◎	◎	◎	◎	◎	◎	◎		
Z			◎	◎	◎	◎	◎	◎	◎		
M		◎	◎	◎	◎	◎					
T				◎	◎	◎					
S					◎	◎					
H						◎	◎	◎		◎	◎

RGK TYPE Available: 4W 5W 6W 7W 9W 11W 17W

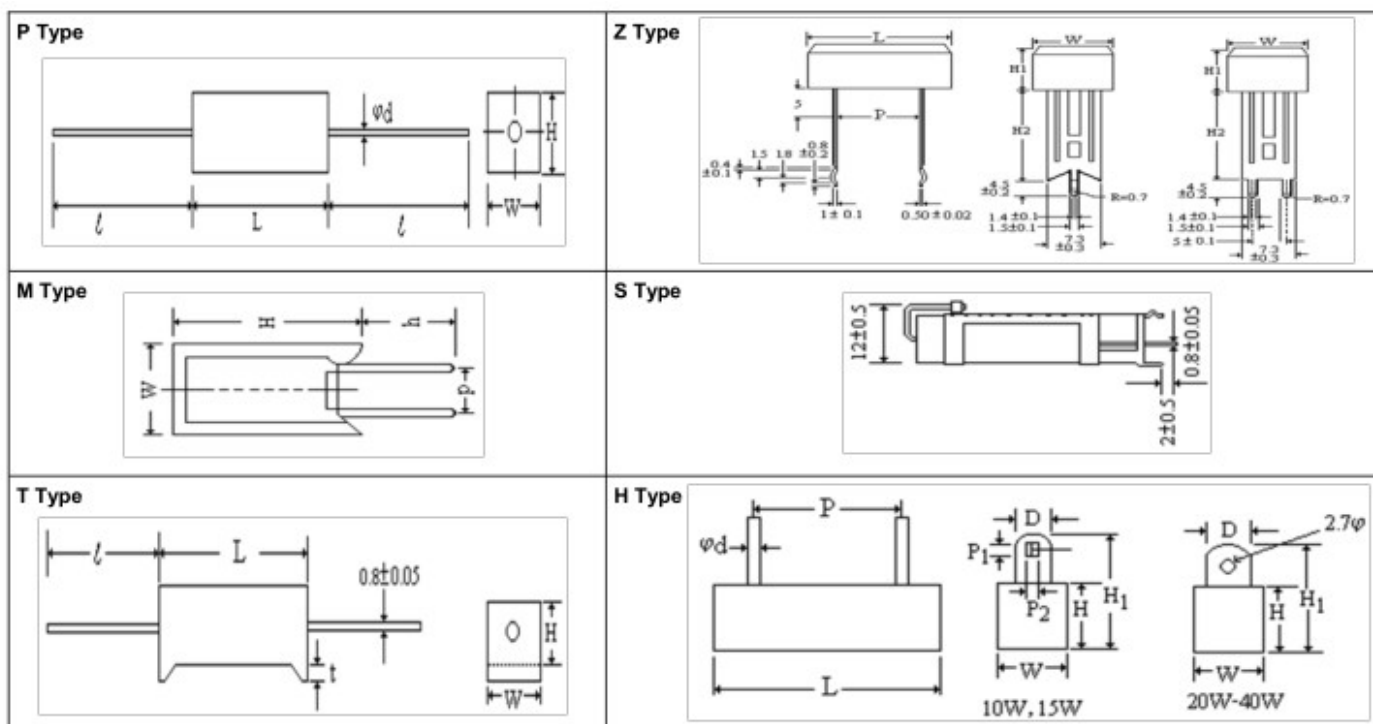
## ■ 额定 Ratings

Rated Power(W)	阻值范围 Resistance Range (Ω)		最高使用电压 MAX.	最高过负荷电压 MAX.	耐电压 Dielectric Withstanding Voltage	温度系数 T. C. R.
	皮模型 Film Type	线绕型 Wire wound Type	Working Voltage	Overload Voltage		
1	4~39K	0.1~330	150V	500V	1000V	≤1Ω: ± 600 ppm/°C >1Ω: ± 350 ppm/°C
2	4~39K	0.1~330	150V	750V		
3	4~39K	0.1~330	350V	1000V		
5	4~50K	0.1~1K	350V	1000V		
7	4~100K	0.1~2.2K	500V	1500V		
10	4~100K	0.1~4.7K	750V	1500V		
15	4~100K	1~5.1K	1000V	1500V		
20	4~100K	1~10K	1000V	1500V		
25	4~100K	1~10K	1000V	1500V		
30	4~100K	1~10K	1000V	1500V		
40	4~100K	1~10K	1000V	1500V		

## ■ 额定温度下降曲线图 Derating curve Example



## ■ 造型图 (Dimensions see as APPENDIX)



## ■性能 Performance

试验项目 Test Items	规格值 Performance Requirements	试验方法 Test Methods
电阻值 Resistance	规定的误差值内 Within specified tolerance	测量点从端盖10mm Measuring points are 10mm from the end cap
温度系数 T. C. R	规定值内 Within specified T. C. R.	室温+100°C Room temperature +100°C
短时间过负荷 Short time overload	$\pm(1\%+0.05\Omega)$	10倍额定功率, 5秒 10 times the rated power for 5 seconds
负荷寿命 Load life	$\pm(5\%+0.1\Omega)$	Rated voltage at 70°C for 1,000 hours 1.5hr ON / 0.5hr OFF Cycles
耐湿负荷寿命 Load life in humidity	$\pm(5\%+0.1\Omega)$	10% rate power load 40°C, 95% RH for 1,000 hours; 1.5h ON / 0.5h OFF cycle
温度循环 Temperature cycle	$\pm(1\%+0.05\Omega)$	5 cycles for -25°C (30min); room temp. (30min) ~ +85°C (30min) room temp. (30min)
焊锡耐热 Resistance to soldering heat	$\pm(1\%+0.05\Omega)$	260°C $\pm$ 5°C for 10 seconds (焊锡槽) 350°C $\pm$ 10°C for 3.5 seconds (手焊锡)
绝缘电阻 Insulation resistance	>1000M $\Omega$	500V 绝缘测试1分钟 500V insulation test 1min.